

# ShopNotes®

Volume # 16



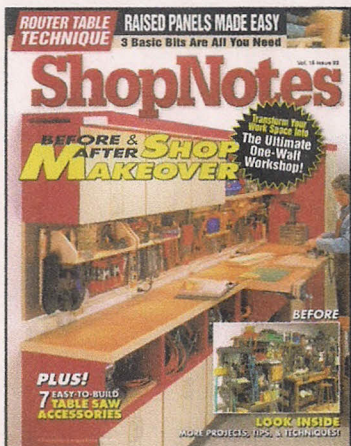
## ISSUE 91 January/February 2007

### Features

- Mobile Planer Stand** \_\_\_\_\_ 18  
*This compact stand provides plenty of extra storage space and outfeed support.*
- Tips for Power Sanding** \_\_\_\_\_ 26  
*Follow our simple, foolproof steps for super-smooth results with your random-orbit sander.*
- Tab-and-Slot Tool Tote** \_\_\_\_\_ 28  
*You'll be amazed at just how much this lightweight tote can hold. And it's easy to build, too.*
- Aluminum Squares** \_\_\_\_\_ 36  
*Build a precision layout tool using the table saw, the drill press, and a few pieces of aluminum.*

### Departments

- Readers' Tips** \_\_\_\_\_ 4
- Great Results with Profile Bits** \_\_\_\_\_ 8
- Metal Drawer Slides** \_\_\_\_\_ 10
- Featherboards** \_\_\_\_\_ 14
- Shop Short Cuts** \_\_\_\_\_ 16
- Working with Aluminum** \_\_\_\_\_ 34
- Planer Tune-Up** \_\_\_\_\_ 40
- Turn Down the Noise** \_\_\_\_\_ 44
- Dead-On Dadoes** \_\_\_\_\_ 46
- Yankee-Style Screwdrivers** \_\_\_\_\_ 48
- Q&A** \_\_\_\_\_ 50
- Sources** \_\_\_\_\_ 51



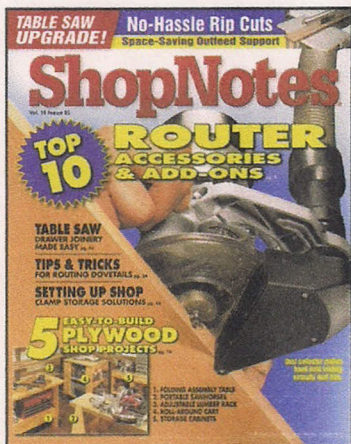
## ISSUE 92 March/April 2007

### Features

- One-Wall Workshop** \_\_\_\_\_ 16  
*Purchased cabinets, custom storage, and a flip-up bench make this the ultimate workcenter.*
- Rabbeted Case Construction** \_\_\_\_\_ 28  
*With ordinary rabbet joints, you can create a rock-solid shop cabinet in no time.*
- Cleanup Center** \_\_\_\_\_ 30  
*Your shop will stay neat and tidy when all your cleaning supplies are organized and close at hand.*
- Dust-Free Blade Cover** \_\_\_\_\_ 36  
*Tired of the dust from your table saw? This shop-made blade cover will put the dust in its place.*

### Departments

- Readers' Tips** \_\_\_\_\_ 4
- Routing Raised Panels** \_\_\_\_\_ 8
- Heavy-Duty Wall Anchors** \_\_\_\_\_ 10
- Plywood Edging Bits** \_\_\_\_\_ 12
- Shop Short Cuts** \_\_\_\_\_ 14
- Dimensional Lumber** \_\_\_\_\_ 34
- Pre-Fab Shop Cabinets** \_\_\_\_\_ 40
- 7 Table Saw Accessories** \_\_\_\_\_ 42
- Snug-Fitting Tenons** \_\_\_\_\_ 46
- Miter Saw Accessories** \_\_\_\_\_ 48
- Q&A** \_\_\_\_\_ 50
- Sources** \_\_\_\_\_ 51



## ISSUE 93 May/June 2007

### Features

- 5 Plywood Shop Projects** \_\_\_\_\_ 16  
*Each of these handy projects can be built quickly and easily from a single sheet of plywood.*
- Table Saw Outfeed Support** \_\_\_\_\_ 30  
*This outfeed support provides an extra hand when you need it — and stores easily when you don't.*
- Tips for Great Dovetails** \_\_\_\_\_ 34  
*For great-looking half-blind dovetails, try out these shop-tested tips and techniques.*
- Dovetail Jig Workcenter** \_\_\_\_\_ 36  
*This workcenter is loaded with features that provide storage, accuracy, and comfort as you work.*

### Departments

- Readers' Tips** \_\_\_\_\_ 4
- Hand-Held Router Accessories** \_\_\_\_\_ 8
- The Spin on Lazy Susans** \_\_\_\_\_ 12
- Tips for Using a Plug Cutter** \_\_\_\_\_ 14
- Shop Short Cuts** \_\_\_\_\_ 28
- Saw Blade Maintenance** \_\_\_\_\_ 42
- Quick & Easy Clamp Storage** \_\_\_\_\_ 44
- The Secret to Locking Rabbets** \_\_\_\_\_ 46
- Add-On Digital Readouts** \_\_\_\_\_ 48
- Q&A** \_\_\_\_\_ 50
- Sources** \_\_\_\_\_ 51

# Shopnotes

# VOLUME 16

## THE YEAR AT A GLANCE

### ISSUE 94

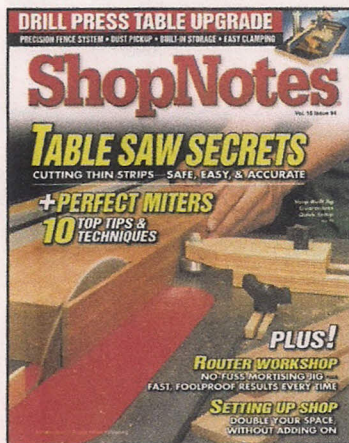
July/August 2007

#### Features

- Drill Press Table & Fence** \_\_\_\_\_ **18**  
*Built-in dust collection, a large work surface, and clamping features make this a must-have upgrade.*
- Cutoff Storage Bins** \_\_\_\_\_ **28**  
*In one weekend, you can build this handy storage system to keep short stock and cutoffs organized.*
- Perfect Miters — Top 10 Tips** \_\_\_\_\_ **32**  
*Follow these time-tested techniques for cutting and assembling tight-fitting miters every time.*
- Miter Vise** \_\_\_\_\_ **36**  
*With sturdy arms and an adjustable clamping block, this vise makes gluing up miters easy.*

#### Departments

- Readers' Tips \_\_\_\_\_ **4**
- Foolproof Hinge Mortises \_\_\_\_\_ **8**
- Ripping Thin Strips \_\_\_\_\_ **10**
- Power Up Your Drill Press \_\_\_\_\_ **14**
- Shop Short Cuts \_\_\_\_\_ **26**
- Tips for Using Cordless Drills \_\_\_\_\_ **42**
- Small Shop Set-Up Secrets \_\_\_\_\_ **44**
- The Basics of Edgebanding \_\_\_\_\_ **46**
- The Versatile Micro-Pinner \_\_\_\_\_ **48**
- Q&A \_\_\_\_\_ **50**
- Sources \_\_\_\_\_ **51**



### ISSUE 95

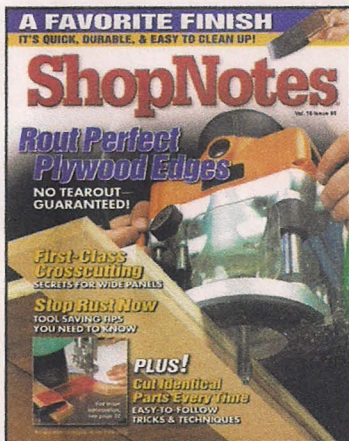
September/October 2007

#### Features

- High-Tech Tool Chest** \_\_\_\_\_ **16**  
*Learn how to rivet aluminum angle and light-weight plywood into a strong, sturdy tool chest.*
- Shop-Built Mallets** \_\_\_\_\_ **26**  
*Laminated construction is the key to making these handy mallets that will last a lifetime.*
- Secrets to Perfect Pieces** \_\_\_\_\_ **32**  
*All you need to cut perfect, identical parts is a template, a band saw, and a router.*
- Multi-Purpose Table** \_\_\_\_\_ **36**  
*This portable workstation has storage, hold-downs, and auxiliary slide-out work surfaces.*

#### Departments

- Readers' Tips \_\_\_\_\_ **4**
- Spiral Bits \_\_\_\_\_ **8**
- Water-Based Finishes \_\_\_\_\_ **10**
- Jig Saw Upgrades \_\_\_\_\_ **12**
- 5 Handy Chisel Tips \_\_\_\_\_ **14**
- Shop Short Cuts \_\_\_\_\_ **24**
- Tool-Saving Tips \_\_\_\_\_ **42**
- Assembly Tables \_\_\_\_\_ **44**
- Crosscutting Wide Panels \_\_\_\_\_ **46**
- Festool Domino \_\_\_\_\_ **48**
- Sources \_\_\_\_\_ **51**



### ISSUE 96

November/December 2007

#### Features

- Multi-Purpose Disk Sander** \_\_\_\_\_ **16**  
*This shop-built sander features a tilting table, storage, and low-cost MDF construction.*
- Custom Chisel Case** \_\_\_\_\_ **30**  
*Store your fine tools in style. You'll have easy access to your chisels and accessory items.*
- Block Plane Tips** \_\_\_\_\_ **34**  
*Learn how to get the most from your block plane with these tips and techniques.*
- Sliding Hold-Down** \_\_\_\_\_ **36**  
*This handy table saw accessory keeps your workpiece flat and releases automatically.*

#### Departments

- Readers' Tips \_\_\_\_\_ **4**
- Quick & Sturdy Drawer Joints \_\_\_\_\_ **8**
- Bit & Blade Cleaners \_\_\_\_\_ **10**
- 5 Combination Square Tips \_\_\_\_\_ **12**
- Strong Draw-Bolt Joinery \_\_\_\_\_ **14**
- Shop Short Cuts \_\_\_\_\_ **28**
- 20 Must-Have Shop Supplies \_\_\_\_\_ **42**
- Sharpening Organizers \_\_\_\_\_ **44**
- Jointing on the Table Saw \_\_\_\_\_ **46**
- The Router Wizard Pro \_\_\_\_\_ **48**
- Q&A \_\_\_\_\_ **50**
- Sources \_\_\_\_\_ **51**

